

# Working Papers | 52 | March 2009

*Joseph F. Francois and Clinton R. Shiells*

## **Dynamic Factor Price Equalization and International Convergence**



## wiwi Working Papers published since 2000:

- No. 52 J. F. Francois and C. R. Shiells: Dynamic Factor Price Equalization and International Convergence. March 2009
- No. 51 P. Esposito and R. Stehrer: Effects of High-Tech Capital, FDI and Outsourcing on Demand for Skills in West and East. March 2009
- No. 50 C. Fillat-Castejón, J. F. Francois and J. Wörz: Cross-Border Trade and FDI in Services. February 2009
- No. 49 L. Podkaminer: Real Convergence and Inflation: Long-Term Tendency vs. Short-Term Performance. December 2008
- No. 48 C. Bellak, M. Leibrecht and R. Stehrer: The Role of Public Policy in Closing Foreign Direct Investment Gaps: An Empirical Analysis. October 2008
- No. 47 N. Foster and R. Stehrer: Sectoral Productivity, Density and Agglomeration in the Wider Europe. September 2008
- No. 46 A. Iara: Skill Diffusion by Temporary Migration? Returns to Western European Work Experience in Central and East European Countries. July 2008
- No. 45 K. Laski: Do Increased Private Saving Rates Spur Economic Growth? September 2007
- No. 44 R. C. Feenstra: Globalization and Its Impact on Labour. July 2007
- No. 43 P. Esposito and R. Stehrer: The Sector Bias of Skill-biased Technical Change and the Rising Skill Premium in Transition Economies. May 2007
- No. 42 A. Bhaduri: On the Dynamics of Profit- and Wage-led Growth. March 2007
- No. 41 M. Landesmann and R. Stehrer: Goodwin's Structural Economic Dynamics: Modelling Schumpeterian and Keynesian Insights. October 2006
- No. 40 E. Christie and M. Holzner: What Explains Tax Evasion? An Empirical Assessment based on European Data. June 2006
- No. 39 R. Römisch and M. Leibrecht: An Alternative Formulation of the Devereux-Griffith Effective Average Tax Rates for International Investment. May 2006
- No. 38 C. F. Castejón and J. Wörz: Good or Bad? The Influence of FDI on Output Growth. An industry-level analysis. April 2006
- No. 37 J. Francois and J. Wörz: Rags in the High Rent District: The Evolution of Quota Rents in Textiles and Clothing. January 2006
- No. 36 N. Foster and R. Stehrer: Modelling GDP in CEECs Using Smooth Transitions. December 2005
- No. 35 R. Stehrer: The Effects of Factor- and Sector-biased Technical Change Revisited. September 2005
- No. 34 V. Astrov, Sectoral Productivity, Demand, and Terms of Trade: What Drives the Real Appreciation of the East European Currencies? April 2005
- No. 33 K. Laski: Macroeconomics versus 'Common Sense'. December 2004
- No. 32 A. Hildebrandt and J. Wörz: Determinants of Industrial Location Patterns in CEECs. November 2004
- No. 31 M. Landesmann and R. Stehrer: Income Distribution, Technical Change and the Dynamics of International Economic Integration. September 2004
- No. 30 R. Stehrer: Can Trade Explain the Sector Bias of Skill-biased Technical Change? May 2004
- No. 29 U. Dulleck, N. Foster, R. Stehrer and J. Wörz: Dimensions of Quality Upgrading in CEECs. April 2004
- No. 28 L. Podkaminer: Assessing the Demand for Food in Europe by the Year 2010. March 2004
- No. 27 M. Landesmann and R. Stehrer: Modelling International Economic Integration: Patterns of Catching-up, Foreign Direct Investment and Migration Flows. March 2004
- No. 26 M. Landesmann and R. Stehrer: Global Growth Processes: Technology Diffusion, Catching-up and Effective Demand. January 2004
- No. 25 J. Wörz: Skill Intensity in Foreign Trade and Economic Growth. November 2003; revised version January 2004
- No. 24 E. Christie: Foreign Direct investment in Southeast Europe: a Gravity Model Approach. March 2003
- No. 23 R. Stehrer and J. Wörz: Industrial Diversity, Trade Patterns and Productivity Convergence. November 2002; revised version July 2003
- No. 22 M. Landesmann and R. Stehrer: Technical Change, Effective Demand and Economic Growth. April 2002
- No. 21 E. Christie: Potential Trade in South-East Europe: A Gravity Model Approach. March 2002
- No. 20 M. Landesmann, R. Stehrer and S. Leitner: Trade Liberalization and Labour Markets: Perspective from OECD Economies. October 2001
- No. 19 R. Stehrer and J. Wörz: Technological Convergence and Trade Patterns. October 2001
- No. 18 R. Stehrer: Expenditure Levels, Prices and Consumption Patterns in a Cross-Section of Countries. August 2001
- No. 17 P. Egger and R. Stehrer: International Outsourcing and the Skill-Specific Wage Bill in Eastern Europe. July 2001
- No. 16 K. Laski and R. Römisch: Growth and Savings in USA and Japan. July 2001
- No. 15 R. Stehrer: Industrial Specialization, Trade, and Labour Market Dynamics in a Multisectoral Model of Technological Progress. January 2001; revised version February 2002
- No. 14 M. Landesmann and R. Stehrer: Potential Switchovers in Comparative Advantage: Patterns of Industrial Convergence. June 2000
- No. 13 F. Turnovec: A Leontief-type Model of Ownership Structures. Methodology and Implications. April 2000
- No. 12 K. Laski: Three Ways to . . . High Unemployment. January 2000

Joseph F. Francois is Professor of Economics at the University of Linz, Fellow at the Centre for Economic Policy Research, and Senior Research Associate at wiiw.

Clinton R. Shiells is Deputy Director of the Joint Vienna Institute (JVI) and staff member at the IMF.

The views expressed in this paper are strictly those of the authors, and do not necessarily represent the views or policies of the International Monetary Fund, Joint Vienna Institute, World Bank, or any other institution with which the authors may be affiliated. In particular, the views expressed herein should not be attributed to the IMF, its Executive Board, or its management. The paper describes research in progress and is being circulated to elicit comments and to further debate.

*Joseph F. Francois and  
Clinton R. Shiells*

**Dynamic Factor Price  
Equalization and  
International  
Convergence**



# Contents

<i>Abstract</i> .....	<i>i</i>
1 Introduction .....	1
2 Basic two-sector model .....	3
2.1 Intermediate demand .....	4
2.2 Production and equilibrium .....	4
3 Integrated intertemporal equilibrium .....	6
3.1 Single country properties .....	6
3.2 Two countries .....	8
3.2.1 Global properties of the integrated intertemporal equilibrium .....	8
3.2.2 International inequality .....	10
3.2.3 Endowment shocks .....	12
3.2.4 Productivity shocks .....	13
4 Outside the dynamic FPE set .....	14
5 Conclusions .....	15
References .....	17
Annex of Figures .....	18



## **Abstract**

*We offer a duality-based methodology for incorporating multi-sector effects of international trade into open economy macroeconomic models, developing the concepts of the dynamic factor price equalization set and the integrated intertemporal equilibrium. Under this approach, the aggregate production function depends on output prices and factor endowment stocks. It preserves all of the structure of a standard GDP function from the trade theory literature. In a two-country version of the model considered below, we examine the properties of the dynamic factor price equalization set. If the global economy is initially outside of this set, the equations of motion will pull the economy back into this set. Inside the dynamic FPE set, factor prices are equalized internationally, and with identical tastes and technology, the economy can be regarded as a fully integrated world equilibrium in a dynamic sense (the integrated intertemporal equilibrium). In this equilibrium, all of the standard properties of a closed economy one-sector neoclassical growth model hold, ruling out cycles and chaos, and allowing us to characterize the evolution of international inequality and the persistence of productivity and endowment shocks. Working from the integrated intertemporal equilibrium, we identify properties of persistence linked to inequality and real economic shocks. Cross-country differences in per capita incomes and wealth, and the factor content of trading patterns, may persist over time and even into the new steady state. This provides yet another reason why we might observe lack of income convergence internationally. In addition, real shocks in one country may be transmitted to the other country through factor markets and product prices, and may have persistent effects into the steady-state as well. The model can also generate an endogenous Balassa-Samuelson effect.*

**Keywords:** *Neoclassical models of trade, economic growth of open economies, cross-country output convergence*

**JEL classification:** *F41, O47, F11, F43*





# Dynamic Factor Price Equalization & International Income Convergence

ABSTRACT: We offer a duality-based methodology for incorporating multi-sector effects of international trade into open economy macroeconomic models, developing the concepts of the dynamic factor price equalization set and the integrated intertemporal equilibrium. Under this approach, the aggregate production function depends on output prices and factor endowment stocks. It preserves all of the structure of a standard GDP function from the trade theory literature. In a two-country version of the model considered below, we examine the properties of the dynamic factor price equalization set. If the global economy is initially outside of this set, the equations of motion will pull the economy back into this set. Inside the dynamic FPE set, factor prices are equalized internationally, and with identical tastes and technology, the economy can be regarded as a fully integrated world equilibrium in a dynamic sense (the integrated intertemporal equilibrium). In this equilibrium, all of the standard properties of a closed economy one-sector neoclassical growth model hold, ruling out cycles and chaos, and allowing us to characterize the evolution of international inequality and the persistence of productivity and endowment shocks. Working from the integrated intertemporal equilibrium, we identify properties of persistence linked to inequality and real economic shocks. Cross-country differences in per capita incomes and wealth, and the factor content of trading patterns, may persist over time and even into the new steady state. This provides yet another reason why we might observe lack of income convergence internationally. In addition, real shocks in one country may be transmitted to the other country through factor markets and product prices, and may have persistent effects into the steady-state as well. The model can also generate an endogenous Balassa-Samuelson effect.

keywords: Neoclassical Models of Trade, Economic Growth of Open Economies, Cross-Country Output Convergence.

JEL codes: F41, O47, F11, F43.

## 1 Introduction

The integration of international trade theory using duality into dynamic macroeconomic models is relatively unexplored. In this paper we follow the pioneering contribution by Manning and Markusen (1991) as well as more recent contributions by Bajona and Kehoe (2006a, 2006b). We offer a duality-based methodology for incorporating multi-sector effects of international trade into open economy macroeconomic models, introducing the concept of the dynamic factor price equalization (FPE) set. For the macro audience, this approach offers a relatively parsimonious way to integrate trade based upon differences in factor endowments into dynamic, multi-country macro models. Multi-country dynamic stochastic general equilibrium models have often included trade arising from scale economies and imperfect competition but have (to the best of our knowledge) not emphasized trade based

on differences in factor endowments. For the trade audience, it provides a framework for integrating the insights from trade models into mainstream open economy macro models. Trade economists have often assumed fixed savings rates in their attempts to embed trade models in a dynamic setting, although this approach is not generally followed in the macro literature. For a general economics audience, the paper offers insights into the nature of income convergence across countries and links this with the evolution of relative factor abundance over time.

In the model, aggregate production in each country is derived from revenue and expenditure functions using duality techniques developed in Dixit and Norman (1980) and Woodland (1982). This aggregate production function depends on output prices and factor endowment stocks. It preserves all of the structure of a standard GDP function from the trade theory literature. The model also specifies that there is a representative infinitely-lived Ramsey consumer that maximizes the sum of present value utility subject to a budget constraint and a no Ponzi game condition. This gives rise to a familiar Euler equation that describes the evolution of consumption over time, as well as a savings-investment equation that describes the evolution of the capital stock. In a two-country version of the model considered below, we examine the properties of the dynamic FPE set. If the global economy is initially outside of this set, the equations of motion will pull the economy back into this set. Once in the dynamic FPE set, the equations of motion will keep the economy in the set.

Inside the dynamic FPE set, factor prices will be equalized internationally, and with identical tastes and technology, the economy can be regarded as a fully integrated world equilibrium in a dynamic sense. We refer to this as the two-country integrated intertemporal equilibrium. In this equilibrium, all of the standard properties of a closed economy one-sector neoclassical growth model hold, ruling out cycles and chaos, and allowing us to characterize the evolution of international inequality and the persistence of productivity and endowment shocks. In particular, we are able to apply results from Caselli and Ventura (2000) to analyze international differences by noting the formal equivalence of our two-country open economy neoclassical growth model and Caselli and Ventura's closed economy neoclassical growth model with heterogeneous households. This allows us to derive a number of results. Outside the steady state, but inside the dynamic FPE set, we will have

absolute divergence of capital holdings but there may be periods of relative convergence or divergence, while the relative consumption ranking will remain unchanged. Once in the global steady state, any remaining relative cross-country inequalities in asset positions and consumption will remain unchanged over time. These results provide yet another reason why we might observe lack of income convergence internationally. Here, even if we have relative convergence, absolute divergence in real incomes is persistent.

The model also allows us to analyze the effects of real shocks. A distinctive feature of the explicit micro foundations for the aggregate production function is that a real shock in one country is immediately transmitted to the other country through the factor markets and traded goods prices. For instance, following a real shock to capital or labor stocks in one country, the resulting changes in income and consumption rankings will persist until the new global steady state is reached and possibly even in the new steady state. This provides a micro-founded explanation for the persistent effects of output shocks found in Cerra and Saxena (2008). Changes in the pattern of trade resulting from a factor endowment shock will also persist until the new steady state is reached and may also persist even in the new steady state. In addition, if we equate services with labor intensive production, the model yields an endogenous Balassa-Samuelson effect.

The remainder of the paper is organized as follows. The basic two-sector, one country model is described in Section 2, including the micro foundations of the aggregate production function. Section 3 considers the Ramsey growth framework and the properties of the single country equilibrium, the two-country integrated intertemporal equilibrium, and the results described briefly above. Section 4 considers what happens outside the dynamic FPE set. Some conclusions are offered in Section 5.

## **2 Basic Two-Sector Model**

We start with the properties of a single, integrated economy with capital  $K$  and labor  $L$  that are fully mobile between sectors, two intermediate goods  $X_1$  and  $X_2$  produced using  $K$  and  $L$ , and a set of consumers with identical homothetic preferences defined over a composite  $Q$  of intermediate goods  $X_1$  and  $X_2$ .

## 2.1 Intermediate demand

We define an aggregate good  $Q$  that is consumed or invested. It serves as the numeraire.

$$Q = f(X) \tag{1}$$

where  $f(\cdot)$  is a strictly increasing, strictly concave, twice continuously differentiable, linear homogeneous aggregator function. Producers choose the mix of  $X_1$  and  $X_2$  that minimizes the cost of intermediate goods needed to produce final output level  $Q$ . This yields the expenditure function  $e(P, Q)$ :

$$e(P, Q) = \min_X \{P \cdot X \mid f(X) \geq Q\} \tag{2}$$

Given the linear homogeneity of  $f(\cdot)$ , the expenditure function can be expressed as a function of price aggregator  $I(P)$ :

$$e(P, Q) = I(P) Q \tag{3}$$

From the envelope theorem, the vector of demand quantities  $X$  can be recovered from the expenditure function.

$$X = \frac{\partial e(P, Q)}{\partial P} = Q \cdot \frac{\partial I(P)}{\partial P} \tag{4}$$

## 2.2 Production and equilibrium

Firms are competitive and produce goods  $X_j$  with strictly increasing, strictly concave, continuously differentiable, linear homogeneous technologies  $h^j(\cdot)$  defined over  $K$  and  $L$ . Given our technology set, this means we can define the minimized unit cost of production  $\beta_j$  as a function of the vector of factor prices  $\omega$ :

$$\beta_j(\omega) = \min_{v^j} \{ \omega \cdot v^j \mid h^j(v^j) = 1 \} \tag{5}$$

where  $j = 1, 2$  and  $v^j \in (K_j, L_j)$ . From the envelope theorem we can also then derive the vector of cost-minimizing unit input coefficients  $a$  with elements  $a_{j,i}$  from  $\omega$ :

$$a_{j,i} = \frac{\partial \beta_j}{\partial \omega_i} \geq 0 \quad (6)$$

where  $j = 1, 2$  and  $i = K, L$ . At the same time, from the dual relationship of profit maximization and cost minimization, we can combine relative factor prices with unit input coefficients to obtain an expression involving relative goods prices.

$$\frac{\sum \omega_i a_{j,i}}{\sum \omega_i a_{k,i}} = \frac{\beta_j}{\beta_k} = \frac{p_j}{p_k} \quad (7)$$

This gives us the dual underpinnings of the Lerner-Pierce diagram (Figure 1). In the figure, the relative price of  $X_1$  and  $X_2$  equals relative costs, so that the factor price ratio  $-\omega_L/\omega_K = -w/r$  is tangent to the unit value isoquants for any price vector  $P$  consistent with production of both goods under zero profit conditions. Starting from an endowment vector like point  $V$  in Figure 1 (which also shows the range of capital/labor ratios within which both countries produce each good, known as the diversification cone), we can recover the value of production (GDP) for any price vector  $P$  by multiplying the endowment vector  $V$  by factor prices  $\omega$ . This is the revenue function  $g$ .

$$Q = g(P, V) = \min_{\omega} \{ \omega \cdot V \mid \beta(\omega) \geq P \} \quad (8)$$

The revenue function may equivalently be derived as the maximum value of output of the intermediate goods  $X$  at prices  $P$  subject to the resource constraints:

$$Q = g(P, V) = \max_X \{ P \cdot X \mid a \cdot X \leq V \} \quad (9)$$

From the envelope theorem, we can recover the supply vector  $X$  from goods prices  $P$  and endowments  $V$ . Factor prices can also be recovered for any set of (feasible) goods price

and endowment vectors.

$$X = \frac{\partial g(P, V)}{\partial P} \quad (10)$$

$$\omega = \frac{\partial g(P, V)}{\partial V} \quad (11)$$

Equilibrium GDP  $\hat{Q}$  and prices  $\hat{P}$  are defined by the equality of income and expenditure and market clearing conditions.

$$e(\hat{P}, \hat{Q}) - g(\hat{P}, V) = 0 \quad (12)$$

$$\frac{\partial e(\hat{P}, \hat{Q})}{\partial P} - \frac{\partial g(\hat{P}, V)}{\partial P} = 0 \quad (13)$$

We can, in turn, derive the equilibrium factor income vector  $\hat{\omega}$  from equilibrium goods prices.

$$\hat{\omega} = \frac{\partial g(\hat{P}, V)}{\partial V} \quad (14)$$

From equations (5)-(14), equilibrium GDP  $\hat{Q}$ , returns to labor  $\hat{w}$  and capital  $\hat{r}$ , and relative factor intensities  $\hat{a}$  are all defined, in reduced form, by relative endowments and the technology set.

$$\hat{Q} = G(V) \quad (15)$$

$$\hat{w} = W(V) \quad (16)$$

$$\hat{r} = R(V) \quad (17)$$

$$\hat{a} = A(V) \quad (18)$$

### 3 Integrated Intertemporal Equilibrium

#### 3.1 Single country properties

The previous section defined the static production structure. This section specifies the dynamic structure of the model. Time subscripts will generally be suppressed to simplify the notation, except where necessary. Infinitely lived consumers maximize a standard

intertemporal utility function with discount rate  $\rho$  and inverse elasticity of substitution  $\theta$ :

$$U(t) = \int_t^\infty u[c(v)]e^{-\rho v} dv \quad (19)$$

$$u(c) = \frac{c^{1-\theta} - 1}{1-\theta} \quad (20)$$

where  $\theta > 0$ , per capita consumption  $c$  is measured in units of  $Q$ , and population size is assumed constant and equal to the labor stock  $L$  for simplicity. Households maximize intertemporal utility subject to the budget constraint, expressed in per capita terms:

$$\dot{a} = w + ra - c \quad (21)$$

where  $a$  is household assets in per capita terms,  $\dot{a}$  is the time derivative of  $a$ , and  $w$  and  $r$  are factor returns defined by equations (16) and (17), all measured in units of  $Q$ . We impose the usual no Ponzi game condition to rule out explosive borrowing by households.

$$\lim_{t \rightarrow \infty} [a(t)e^{-\bar{r}(t)t}] \geq 0 \quad (22)$$

$$\bar{r}(t) = (1/t) \int_0^t r(v) dv \quad (23)$$

We have the familiar Euler equation for the evolution of consumption:

$$\dot{c}/c = (1/\theta)(r - \rho) \quad (24)$$

$$c(t) = c(0) e^{(1/\theta)[\bar{r}(t) - \rho]t} \quad (25)$$

We have a similar standard result for the evolution of the capital stock ( $k = K/L$ ):

$$\dot{k} = G(k) - c - \delta k \quad (26)$$

where  $\delta$  is the depreciation rate.

**Proposition 1** *Outside the steady state, the country's capital stock  $k$  and the capital intensity of both sectors will rise (fall) over time when we are below (above) steady-state values, with a consequent rise (fall) in the wage-rental ratio.*

*discussion:* Together, equations (24) and (26) define the evolution of per-capita consumption and the capital stock outside the steady state, as well as the steady-state values themselves. In aggregate, we have the standard result that capital stocks and consumption will grow over time on a per-capita basis in an economy below steady-state values, while the opposite happens above these levels. Given equation (26) we can derive the evolution of the composition of production by differentiating equations (12) and (13) with respect to changes in the capital stock. Because  $k$  rises in the aggregate GDP function, we know that wages  $w$  will rise relative to the return to capital  $r$ . Moreover,  $w$  will rise and  $r$  will fall measured in units of either intermediate good and, given the price aggregator function  $I(P)$ , also in units of the composite good  $Q$ . Finally, there are three effects driving output mix. From the Rybczynski theorem, holding prices constant production of the capital-intensive intermediate good will expand and that of the labor-intensive good will contract. However, relative goods prices are endogenous, and depending on substitution effects the relative outputs of the capital and labor intensive sectors may rise or fall. If we equate services with the labor intensive sector, we will have a rising price for services with rising income – a version of the Balassa-Samuelson effect. We summarize this as the following corollary.

**Corollary 1** : *Outside the steady state, the price of (labor intensive) services will rise over time when we are below (above) steady-state values – a version of the Balassa-Samuelson effect.*

## 3.2 Two countries

We next focus on the two country case, where trade leads to equalization of relative factor prices in the integrated equilibrium. From the recent literature on representative agent models, this means we can also characterize the evolution of relative incomes, capital stocks, and output in the transition to steady state (Caselli and Ventura), once trade has equalized prices.

### 3.2.1 global properties of the integrated intertemporal equilibrium

We now turn to the description of the two-country integrated intertemporal equilibrium, where the two countries have the structure outlined above. We assume both countries have



identical technologies and tastes. Intermediate goods are freely traded internationally, which equalizes their prices across countries. Factors are perfectly mobile domestically but are immobile internationally. International borrowing is precluded, implying that household assets equal the capital stock in each country. We start by returning to the input coefficient ratios in Figure 1 and equation (7). We can define the global endowment vector  $V = \sum_i V_i$ . This is point  $O^2$  in Figure 2. As long as the individual country endowments  $V_i$  ( $i = 1, 2$ ) lie within the diversification cone shown in Figure 1, then trade alone will equalize factor prices. In terms of Figure 2, this means that as long as endowments are inside the box constructed using the equilibrium input vectors, trade equalizes factor prices in an equilibrium with trade in goods (Woodland, Dixit and Norman). This allows us to characterize the properties of the two-country global economy in the integrated intertemporal equilibrium from the properties of a comparable single country representative consumer model.

**Proposition 2** *Outside the steady state, and in the integrated intertemporal equilibrium, the global capital stock and output of the capital-intensive sector rise (fall) over time when we are below (above) steady-state values.*

**Proposition 3** *Globally, the economy will remain inside the range of factor price equalization sets (the dynamic FPE set), defined by the range of factor-intensity ratios consistent with diversified production in equilibrium (diversification cone), along the single country growth path.*

*discussion:* Note that, as long as we are inside the FPE set,  $w$  and  $r$  are equalized across countries. Within the factor price equalization set, representative households in each region will have the same wage income but their capital income will differ. Denoting per-capita holdings of assets in region  $i$  as  $\kappa_i$ , and the global level as  $\kappa$ ,

$$\kappa_i = K_i/L_i \tag{27}$$

$$\kappa = \left( \sum_{i=1,2} \frac{L_i}{\sum_{i=1,2} L_i} \kappa_i \right) \tag{28}$$

the propensity to consume will be identical across households, as will the relationship of the change in relative consumption to the interest rate in equation (24) above (Caselli and Ventura, Barro and Sala-i-Martin). This means that, in aggregate, the path of average

consumption per capita  $c$  and average capital per worker  $k$ , and also average assets  $\kappa = k$ , will be identical to the values defined for a global representative household economy using equation (24).

Regarding Proposition 3, we will show in Section 4 below that, if the endowment vector initially lies outside the dynamic FPE set, then differences in rates of return to capital will provide incentives for capital accumulation or decumulation that will move the endowment vector back inside the box over time. Once inside the dynamic FPE set, production will be diversified and the results obtained for an integrated intertemporal equilibrium apply.

### 3.2.2 international inequality

We will now analyze the relative and absolute convergence properties of transition in the two-country model described above. Consistent with Caselli and Ventura, a variety of dynamics are possible regarding the relative convergence or divergence of capital/labor ratios inside the dynamic FPE set. Nevertheless, the rich country stays richer in absolute terms if the global capital stock is initially below its steady-state level.

To see this, begin by noting that for households from country  $j$  ( $j = 1, 2$ ), the evolution of assets is determined by savings (income net of consumption) while consumption itself depends on the propensity to consume  $\mu$ :

$$\dot{\kappa}_j = w + r\kappa_j - c_j \quad (29)$$

$$c_j = \mu(\kappa_j + \tilde{w}) \quad (30)$$

Here  $\tilde{w}$  is the present value of future wage income

$$\tilde{w}(t) = \int_t^\infty w(t)e^{-\bar{r}(t)t} dt \quad (31)$$

and  $\mu$  is the propensity to consume defined implicitly by equation (30). We can combine these equations to obtain the (absolute) evolution of assets.

$$\dot{\kappa}_j = (w - \mu\tilde{w}) + (r - \mu)\kappa_j \quad (32)$$

From equation (32), we can derive expressions that permit consideration of absolute and

relative convergence:

$$\dot{\kappa}_j - \dot{\kappa} = (r - \mu)(\kappa_j - \kappa) \quad (33)$$

$$\frac{\dot{\kappa}_j}{\kappa_j} - \frac{\dot{\kappa}}{\kappa} = (w - \mu\tilde{w})(\kappa_j^{-1} - \kappa^{-1}) \quad (34)$$

Concerning absolute convergence, if the global capital stock is below its steady state level, then we will show below that  $r > \mu$  and a country with a higher capital/labor ratio than the global capital/labor ratio will accumulate capital more quickly in absolute terms than the global level of capital accumulation. In turn, a country with a lower capital/labor ratio than the global ratio will accumulate capital more slowly than the global level. In this situation, the rich will stay richer in the transition to a new steady state.

Conversely, if the global capital stock is above its steady state level, then  $r < \mu$  and the richer country will decumulate capital more quickly than the global rate, which in turn will fall more quickly in absolute terms than the capital stock in the poorer country. In this situation, the richer country once again takes a disproportionate share of the absolute adjustment in the capital stock.

The fact that  $r > \mu$  if the global capital stock is initially below its steady state level can be shown to hold for all  $\theta > 0$  as follows:

$$r(0)/\mu(0) = r(0) \int_0^\infty e^{[\bar{r}(t)(1-\theta)/\theta - \rho/\theta]t} dt > r(0) \int_0^\infty e^{-\bar{r}(t)t} dt > r(0) \int_0^\infty e^{-r(0)t} dt = 1 \quad (35)$$

where the first inequality follows from the fact that  $r > \rho$ , and the second inequality holds because  $r$  is falling, in transition when the capital stock is initially below its steady-state value. Similarly, it can be shown that  $r < \mu$  if the global capital stock is above its steady state level.

From equation (34) and taking the case where the global capital stock is initially below its steady state level, whether or not there is relative convergence depends on the sign of  $w - \mu\tilde{w}$ . If  $w - \mu\tilde{w} > 0$ , the richer country's capital stock will grow at a slower rate than the global capital stock, and in turn the poorer country's capital stock will at a faster rate than the global capital stock, and there will be relative convergence. Conversely, if  $w - \mu\tilde{w} < 0$ , there will be relative divergence. On the one hand, unfortunately this term depends in a

complex way on the time paths of wages and returns to capital and theory does not provide clear predictions regarding its sign. It may indeed change sign any number of times during the transition period. On the other hand, this implies that the model allows for a rich set of possible dynamics in relative income – a global version of the issues emphasized by Caselli and Ventura. In steady state, it can be shown that  $w = \mu\tilde{w}$ , implying that capital grows at the same rate in all countries (zero in our simplified setup, though it could easily be generalized to allow for positive growth in steady state).

The following propositions summarize the results of our discussion:

**Proposition 4** *If the global capital stock is initially below the steady state, but inside the dynamic FPE set, there will be absolute divergence of capital holdings although in relative terms countries may either converge or diverge. Factor price equalization will hold even though capital formation is funded domestically, consistent with Feldstein and Horioka (1980).*

**Proposition 5** *Outside the steady state, but inside the dynamic FPE set, the relative consumption ranking will remain unchanged.*

**Proposition 6** *Once in global steady state, any remaining relative cross-country inequalities in asset positions and consumption will remain unchanged.*

*discussion:* We have already demonstrated the first proposition. The second of these propositions follows directly from the equalization of returns to capital in equation (24) inside the dynamic factor price equalization set. The third also follows from equation (24) because returns are equalized in the integrated intertemporal equilibrium and (unequal) consumption patterns remain unchanged. Similarly, in steady state asset positions are by definition unchanged.<sup>1</sup>

### 3.2.3 endowment shocks

The last two propositions above also lead to the following corollaries:

---

<sup>1</sup>See Caselli and Ventura (2000) for a discussion in a more general case. From their paper, if government consumption is introduced with exogenous price growth and if households have a heterogeneous endowment of productivities, then relative rankings may reverse in the path to steady state.

**Corollary 2** : *Following a real shock to capital or labor stocks, resulting changes in relative income and consumption rankings persist in transition to the steady state, and will persist in the steady state.*

**Corollary 3** : *Following a real shock to capital or labor stocks, resulting changes in the composition of trade persist in transition to the steady state, and will persist in the steady state.*

*discussion:* Assume we start with identical countries in steady state (i.e., along the diagonal in Figure 2) and then experience a demographic shock, where the population drops in one country. We now have one capital-rich and one capital-poor country. The capital-abundant country will export the capital-intensive good, while the labor-abundant country will export the labor-intensive good. Essentially, trade will reallocate the consumption of factor services, equalizing factor returns across countries (measured in units of numeraire  $Q$ ). We now have too much capital in the global economy, so the capital stock will fall over time. Moreover, the rich country's capital/labor ratio will fall by more than the poor country's in absolute terms because  $r$  is rising and  $\mu$  is falling in transition with  $r < \mu$ . This follows from the discussion of equation (33). As we move to the new steady state, the newly capital-rich region will remain relatively capital rich, but its capital stock will adjust more quickly in absolute terms, and in the new steady state trade will reflect the initial demographic shock.<sup>2</sup>

### 3.2.4 productivity shocks

We next consider productivity shocks and two countries that differ initially in their capital/labor ratios. In particular, consider a symmetric, positive productivity shock to both sectors in the rich country only. This will effectively increase the economic size of the rich country while leaving its factor intensity unchanged in effective physical units. The real shock in the rich country will therefore be transmitted to the poor country through international trade in intermediate goods, which in turn will affect factor returns. The shock will reduce the return to capital and increase the wage rate in the integrated intertemporal

---

<sup>2</sup>Bajona and Kehoe (2006b) provide an alternative proof, based on monotonicity, that the initial ranking of countries' capital/labor ratios persists.

equilibrium. Following the discussion of endowment shocks, surprisingly, the effects of a productivity shock in one country will be transmitted to the other country in perpetuity.

**Proposition 7** *A productivity shock to the rich country will be transmitted to the poor country through factor markets and traded goods prices. The effects of the productivity shock to the rich country on the poor country will be permanent.*

## 4 Outside the Dynamic FPE Set

The remaining question is whether the world economy with free trade in intermediate goods but internationally immobile factors will move back into the dynamic FPE set if a shock takes it out of the set. Consider starting from an integrated intertemporal equilibrium with two identical countries in steady state and then reallocating enough capital from one country to the other so that the endowment vector moves out of the dynamic FPE set. For the world as a whole, if it were fully integrated, there would be no need for a change in the aggregate capital stock because it was previously in steady state. The question is whether the now poor country will accumulate capital and the now rich country will decumulate capital in transition to a new steady state.

If these were two closed economies, standard results for the Ramsey-Cass-Koopmans model could be used to show that the poor country would indeed accumulate capital and the rich country would decumulate capital. This follows from the Euler equation (24) in steady state, which serves to pin down the (common) steady state capital/labor ratio by requiring that the marginal product of capital is equal to the discount rate. The discount rate is unchanged and common to the two countries, which implies that each country would adjust its capital/labor ratio over time to return to the (unchanged) steady state capital/labor ratio.

Being outside the dynamic FPE set implies that at least one country is completely specialized in the production of one of the intermediate goods so that we cannot appeal to results in the integrated intertemporal equilibrium. In theory, standard results based upon a closed economy growth model do not necessarily hold when there is free trade in intermediate goods but internationally immobile factors, as discussed in Bajona and Kehoe (2006a, 2006b). However, with competitive behavior we can in fact characterize both the

dynamics of capital accumulation outside the steady state, and the properties of the steady state itself. Consider first the latter. In the steady state, rates of return must be equalized, as determined by the rate of time discount:  $r = \rho$  in both countries. Since at least one country must be diversified in the steady state, there is also a unique steady-state capital-labor ratio for each sector consistent with this rate of return  $r$ . (See our earlier discussion of the Lerner-Pearce diagram.) This means that if one of the countries remains specialized, it must be on the border of the steady-state FPE set. Otherwise, both countries must be strictly inside the dynamic FPE set in steady state. In terms of the evolution of the capital stock, the rate of return is higher for the capital poor country when we are outside the dynamic FPE set, while prices of the intermediate goods and final good are equalized by trade. As such, rates of capital accumulation will be higher in the poor country.<sup>3</sup> We summarize these points in the following propositions:

**Proposition 8** *If we are outside the dynamic FPE set, the mechanisms driving capital accumulation will drive the global economy toward the dynamic FPE set.*

**Proposition 9** *The existence of a steady state implies factor price equalization. The global economy is either on the border or inside the steady-state FPE set.*

## 5 Conclusions

In this paper we have developed a tractable way to incorporate the micro structure of dual models of international trade into a standard class of dynamic open economy macro models. In the process, we have introduced the concept of a dynamic FPE set and an integrated intertemporal equilibrium. These analytical tools should be useful in a variety of different applications, including the trade structure underlying open economy macro models, as well as the macro structure of dynamic trade models.

Aside from the methodological contributions of the paper, we have derived a number of results concerning trade, growth, and income convergence. We show that wealthier countries, in the sense of having higher capital/labor ratios, may stay absolutely wealthier over time, both in the transition and in the new steady state. The pattern of trade will reflect a

---

<sup>3</sup>We assume here that individual agents do not incorporate the evolution of terms of trade effects into their optimization problem. This does imply opportunities for public policy beyond the scope of this paper. It is also consistent with competitive behavior on the part of agents.

higher capital intensity and this will also persist over time. Real shocks in one country will be transmitted to the other country through the factor markets and traded goods prices. Surprisingly, the effects of real shocks will be permanent in this model. Some logical extensions include considering nontraded goods and the real exchange rate, dynamic behavior of specific factors models, and the effects of demographic shocks in multi-country overlapping generations models.



## References

- BAJONA, CLAUSTRE, AND TIMOTHY J. KEHOE (2006a). "Trade, Growth, and Convergence in a Dynamic Heckscher-Ohlin Model." Research Department Staff Report 378, Federal Reserve Bank of Minneapolis, September 2006.
- BAJONA, CLAUSTRE, AND TIMOTHY J. KEHOE (2006b). "Demographics in Dynamic Heckscher-Ohlin Models: Overlapping Generations versus Infinitely Lived Consumers." Research Department Staff Report 377, Federal Reserve Bank of Minneapolis, October 2006.
- BARRO, ROBERT J., AND XAVIER SALA-I-MARTIN (2004). *Economic Growth* Second Edition, Cambridge: MIT Press.
- CASELLI, FRANCESCO, AND JAUME VENTURA (2000). "A Representative Consumer Theory of Distribution." *American Economic Review* Vol. 90, No. 4 (September): 909-926.
- CERRA, VALERIE, AND SWETA CHAMAN SAXENA (2008). "Growth Dynamics: The Myth of Economic Recovery." *American Economic Review* Vol. 98, No. 1: 439-457, forthcoming.
- DIXIT, AVINASH K., AND VICTOR NORMAN (1980). *Theory of International Trade: A Dual, General Equilibrium Approach* Cambridge: MIT Press.
- FELDSTEIN, MARTIN, AND CHARLES HORIOKA (1980). "Domestic Savings and International Capital Flows." *Economic Journal* Vol. 90, No. 358 (June): 314-329.
- MANNING, RICHARD, AND JAMES R. MARKUSEN (1991). "National Product Functions in Comparative Steady-State Analysis." *International Economic Review* Vol. 32, No. 3 (August): 613-624.
- WOODLAND, ALAN D. (1982). *International Trade and Resource Allocation* Amsterdam and New York: North-Holland Elsevier Science Publishers.

Figure 1

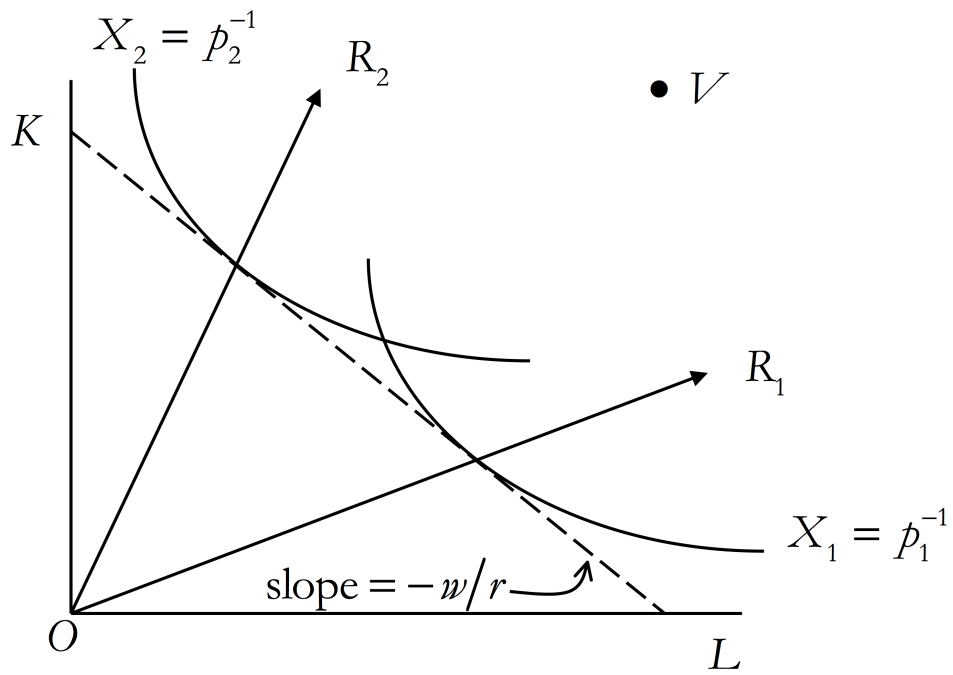
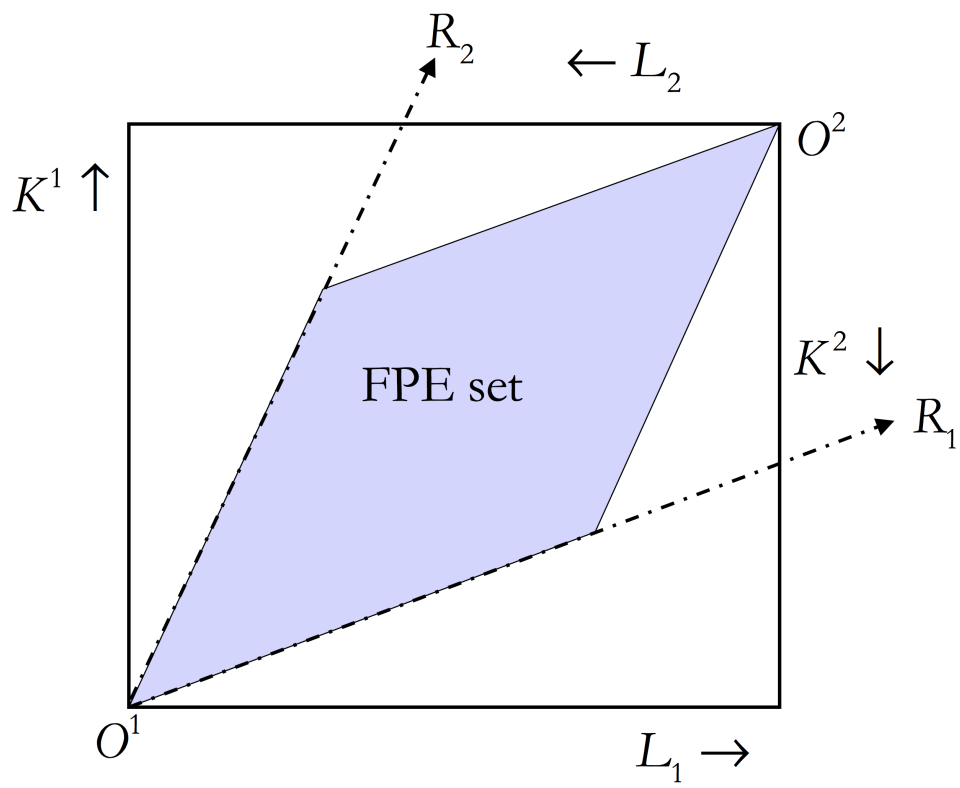


Figure 2



## Short list of the most recent wiiw publications (as of March 2009)

For current updates and summaries see also  
wiiw's website at [www.wiiw.ac.at](http://www.wiiw.ac.at)

### **Dynamic Factor Price Equalization and International Convergence**

by **Joseph F. Francois and Clinton R. Shiells**

wiiw Working Papers, No. 52, March 2009  
19 pages including 2 Figures  
hardcopy: EUR 8.00 (PDF: free download from wiiw's website)

---

### **Effects of High-Tech Capital, FDI and Outsourcing on Demand for Skills in West and East**

by **Piero Esposito and Robert Stehrer**

wiiw Working Papers, No. 51, March 2009  
21 pages including 6 Tables  
hardcopy: EUR 8.00 (PDF: free download from wiiw's website)

---

### **wiiw Monthly Report 3/09**

edited by **Leon Podkaminer**

- Euro or not? Early lessons from the crisis
  - Migration from the New to the Old EU Member States: country experiences
  - Outsourcing and skills: an empirical investigation
  - Statistical Annex: Selected monthly data on the economic situation in Southeast Europe, Russia and Ukraine
- wiiw, March 2009  
32 pages including 10 Tables and 9 Figures  
(exclusively for subscribers to the wiiw Service Package)
- 

### **Cross-Border Trade and FDI in Services**

by **Carmen Fillat-Castejón, Joseph F. Francois and Julia Wörz**

wiiw Working Papers, No. 50, February 2009  
49 pages including 15 Tables and 3 Figures  
hardcopy: EUR 8.00 (PDF: free download from wiiw's website)

---

### **Differentiated Impact of the Global Crisis**

by **Vladimir Gligorov, Gábor Hunya, Josef Pöschl et al.**

wiiw Current Analyses and Forecasts. Economic Prospects for Central, East and Southeast Europe, No. 3, February 2009  
137 pages including 40 Tables and 16 Figures  
hardcopy: EUR 70.00 (PDF: EUR 65.00)

---

## **wiiw Monthly Report 2/09**

edited by **Leon Podkaminer**

- The Republic of Moldova: short-lived recovery
- Patterns of international trade diversification in the transition economies
- Some reflections on the reform of the international financial architecture
- Statistical Annex: Selected monthly data on the economic situation in Central and Eastern Europe (tables)

wiiw, December 2009

34 pages including 12 Tables and 2 Figures

(exclusively for subscribers to the wiiw Service Package)

---

## **Entwicklungen der Weltwirtschaft im Kontext der Finanzmarktkrise**

by **Michael Landesmann und Roman Stöllinger**

wiiw Research Papers in German language, January 2009

(reprinted from: *Österreichs Außenwirtschaft 2008*, commissioned by the Austrian Federal Ministry of Economics and Labour (BMWA) in the framework of the Research Centre International Economics (FIW) and funded under the internationalization programme 'go international')

22 pages including 6 Figures

hardcopy: EUR 8.00 (PDF: free download from wiiw's website)

---

## **wiiw Monthly Report 1/09**

edited by **Leon Podkaminer**

- The Chinese automotive industry in a global context
- Index of global tolerance: a quantitative analysis based on 'World Values Survey' data
- Some reflections on the crisis management in the EU
- Statistical Annex: Selected monthly data on the economic situation in Southeast Europe, Russia and Ukraine (tables)

wiiw, January 2009

30 pages including 14 Tables

(exclusively for subscribers to the wiiw Service Package)

---

## **Western Balkan Countries: Adjustment Capacity to External Shocks, with a Focus on Labour Markets**

by **Vladimir Gligorov, Anna Iara, Michael Landesmann, Robert Stehrer and Hermine Vidovic**

wiiw Research Reports, No. 352, December 2008

136 pages including 35 Tables and 40 Figures

hardcopy: EUR 8.00 (PDF: free download from wiiw's website)

---

## **Migration and Commuting Propensity in the New EU Member States**

by **Anna Iara, Michael Landesmann, Sebastian Leitner, Leon Podkaminer, Roman Römisch and Hermine Vidovic**

wiiw Research Reports, No. 351, December 2008

106 pages including 21 Tables, 16 Figures and 5 Maps

hardcopy: EUR 22.00 (PDF: EUR 20.00)

---

## **Real Convergence and Inflation: Long-Term Tendency vs. Short-Term Performance**

by **Leon Podkaminer**

wiiw Working Papers, No. 49, December 2008  
17 pages including 4 Tables and 6 Figures  
hardcopy: EUR 8.00 (PDF: free download from wiiw's website)

---

## **International Trade and Economic Diversification: Patterns and Policies in the Transition Economies**

by **Michael Landesmann**

wiiw Research Reports, No. 350, December 2008  
87 pages including 17 Tables and 18 Figures  
hardcopy: EUR 22.00 (PDF: EUR 20.00)

---

## **wiiw Monthly Report 12/08**

edited by **Leon Podkaminer**

- Albania: the importance of being aside
- Bosnia and Herzegovina: suffering from unfavourable constellations
- Kazakhstan: commodity price decline aggravates crisis
- Kosovo: risks to recovery
- Montenegro: budget to the rescue
- Serbia: risking recession
- Statistics: Minimum interest rates, nominal exchange rates and real appreciation in Central, East and Southeast Europe, 2005-2008 (cross-country graphics)

wiiw, December 2008  
24 pages including 5 Tables and 9 Figures  
(exclusively for subscribers to the wiiw Service Package)

---

## **wiiw Monthly Report 11/08**

edited by **Leon Podkaminer**

- Russia in the global financial storm
- Ukraine: 'hard landing' in sight
- Croatia: slowing economy
- Macedonia: external balances worsen
- Turkey's nerves of steel
- Statistics: Consumer and producer prices; employees and unemployment in Central, East and Southeast Europe, 2003-2008 (graphics)

wiiw, November 2008  
28 pages including 6 Tables and 10 Figures  
(exclusively for subscribers to the wiiw Service Package)

---

## **The Role of Public Policy in Closing Foreign Direct Investment Gaps: An Empirical Analysis**

by **Christian Bellak, Markus Leibrecht and Robert Stehrer**

wiiw Working Papers, No. 48, October 2008  
23 pages including 8 Tables  
hardcopy: EUR 8.00 (PDF: free download from wiiw's website)

---

## **wiiw Service Package**

The Vienna Institute offers to firms and institutions interested in unbiased and up-to-date information on Central, East and Southeast European markets a package of exclusive services and preferential access to its publications and research findings, on the basis of a subscription at an annual fee of EUR 2,000.

This subscription fee entitles to the following package of **Special Services**:

- A free invitation to the Vienna Institute's **Spring Seminar**, a whole-day event at the end of March, devoted to compelling topics in the economic transformation of the Central and East European region (for subscribers to the wiiw Service Package only).
- Copies of, or online access to, **The Vienna Institute Monthly Report**, a periodical consisting of timely articles summarizing and interpreting the latest economic developments in Central and Eastern Europe and the former Soviet Union. The statistical annex to each *Monthly Report* contains, alternately, country-specific tables or graphs with monthly key economic indicators, economic forecasts, the latest data from the wiiw Industrial Database and excerpts from the wiiw FDI Database. This periodical is not for sale, it can only be obtained in the framework of the wiiw Service Package.
- Free copies of the Institute's **Research Reports** (including *Reprints*), **Current Analyses and Forecasts**, **Country Profiles** and **Statistical Reports**.
- A free copy of the **wiiw Handbook of Statistics** (published in October/November each year and containing more than 400 tables and graphs on the economies of Albania, Bosnia and Herzegovina, Bulgaria, Croatia, the Czech Republic, Estonia, Hungary, Latvia, Lithuania, Macedonia, Montenegro, Poland, Romania, Russia, Serbia, the Slovak Republic, Slovenia and Ukraine)
- Free online access to the **wiiw Monthly Database**, containing more than 1200 leading indicators monitoring the latest key economic developments in ten Central and East European countries.
- **Consulting**. The Vienna Institute is pleased to advise subscribers on questions concerning the East European economies or East-West economic relations if the required background research has already been undertaken by the Institute. We regret we have to charge extra for *ad hoc* research.
- Free access to the Institute's specialized economics library and documentation facilities.

Subscribers who wish to purchase wiiw data sets **on CD-ROM** or special publications not included in the wiiw Service Package are granted considerable **price reductions**.

**For detailed information about the wiiw Service Package  
please visit wiiw's website at [www.wiiw.ac.at](http://www.wiiw.ac.at)**

To  
The Vienna Institute  
for International Economic Studies  
Rahlgasse 3  
A-1060 Vienna

- Please forward more detailed information about the Vienna Institute's Service Package
- Please forward a complete list of the Vienna Institute's publications to the following address

Please enter me for

- 1 yearly subscription of *Research Reports* (including *Reprints*)  
at a price of EUR 225.00 (within Austria), EUR 250.00 (Europe) and EUR 265.00 (overseas) respectively

Please forward

- the following issue of *Research Reports* .....
- the following issue of *Current Analyses and Forecasts* .....
- the following issue of *Country Profiles* .....
- the following issue of *Working Papers* .....
- the following issue of *Statistical Reports* .....
- the following issue of *Research Papers in German language* .....
- the following issue of *wiiw Database on Foreign Direct Investment* .....
- the following issue of *wiiw Handbook of Statistics* .....

.....  
Name

.....  
Address

.....  
Telephone

Fax

E-mail

.....  
Date

.....  
Signature

---

Herausgeber, Verleger, Eigentümer und Hersteller:

Verein „Wiener Institut für Internationale Wirtschaftsvergleiche“ (wiiw),  
Wien 6, Rahlgasse 3

Postanschrift: A-1060 Wien, Rahlgasse 3, Tel: [+431] 533 66 10, Telefax: [+431] 533 66 10 50

Internet Homepage: [www.wiiw.ac.at](http://www.wiiw.ac.at)

Nachdruck nur auszugsweise und mit genauer Quellenangabe gestattet.

P.b.b. Verlagspostamt 1010 Wien